



HTMLDOC 1.8 Software Users Manual

ESP-003-19991213

Easy Software Products

Copyright 1997-1999, See the GNU General Public License for Details.

Table of Contents

<u>Introduction</u>	<u>1</u>
<u>History</u>	1
<u>Organization of This Manual</u>	2
<u>Support</u>	2
<u>Copyright, Trademark, and License Information</u>	2
<u>Chapter 1 – Installing HTMLDOC</u>	<u>5</u>
<u>Installing a Binary Distribution</u>	5
<u>Requirements</u>	5
<u>Installing HTMLDOC under Red Hat Linux</u>	6
<u>Uninstalling HTMLDOC under Red Hat Linux</u>	6
<u>Installing HTMLDOC under UNIX</u>	6
<u>Uninstalling HTMLDOC under UNIX</u>	6
<u>Installing HTMLDOC under Windows</u>	6
<u>Uninstalling HTMLDOC under Windows</u>	6
<u>Installing HTMLDOC from the Source Distribution</u>	6
<u>Requirements</u>	7
<u>Configuring the UNIX Source</u>	7
<u>Compiling under UNIX</u>	7
<u>Installing under UNIX</u>	8
<u>Compiling with Visual C++</u>	8
<u>Installing with Visual C++</u>	8
<u>Chapter 2 – Getting Started</u>	<u>9</u>
<u>Starting HTMLDOC</u>	9
<u>Choosing a HTML File</u>	9
<u>Setting the Output File</u>	11
<u>Generating the Document</u>	11
<u>Chapter 3 – Generating Books</u>	<u>13</u>
<u>Overview</u>	13
<u>Choosing HTML Files</u>	14
<u>Selecting a Title Image</u>	14
<u>Setting the Output Format</u>	15
<u>Setting the Output File</u>	15
<u>Generating the Document</u>	15
<u>Saving Your Book</u>	16
<u>Chapter 4 – HTMLDOC from the Command-Line</u>	<u>17</u>
<u>Converting Web Pages</u>	17
<u>Generating Books</u>	17
<u>Setting the Title Image</u>	18
<u>Chapter 5 – Using HTMLDOC on a Web Server</u>	<u>19</u>
<u>The Basics</u>	19
<u>Calling HTMLDOC from a Shell Script</u>	19
<u>Calling HTMLDOC from Perl</u>	20

Table of Contents

Calling HTMLDOC from C.....	20
Chapter 6 – HTML Reference.....	23
Elements.....	23
Comments.....	26
FONT Attributes.....	26
Headings.....	27
Numbered Headings.....	27
Links.....	28
META Attributes.....	28
Page Breaks.....	29
Tables.....	29
Chapter 7 – GUI Reference.....	31
The HTMLDOC GUI.....	31
Document File Operations.....	31
New.....	31
Open.....	31
Save.....	32
Save As.....	32
Generate.....	32
Close.....	32
The Input Tab.....	33
Document Type.....	33
Input Files.....	33
Add Files.....	33
Edit Files.....	34
Delete Files.....	34
Move Up.....	34
Move Down.....	34
Logo Image.....	34
Title Image.....	34
The Output Tab.....	35
Output To.....	35
Output Path.....	35
Output Format.....	35
Output Options.....	36
Compression.....	36
JPEG Quality.....	36
The Page Tab.....	36
Page Size.....	37
2-Sided.....	37
Landscape.....	37
Top, Left, Right, and Bottom.....	37
Header and Footer.....	37
The TOC Tab.....	38
Table of Contents.....	38

Table of Contents

Numbered Headings	38
Header and Footer	38
Title	38
The Colors Tab	39
Body Color	39
Body Image	39
Text Color	39
The Fonts Tab	40
Base Font Size	40
Line Spacing	40
Body Typeface	40
Heading Typeface	41
Header/Footer Size	41
Header/Footer Font	41
Character Set	41
The PS Tab	42
PostScript Level	42
Send Printer Commands	42
The PDF Tab	43
PDF Version	43
Page Mode	43
Page Layout	43
First Page	43
Page Effect	43
Page Duration	43
Effect Duration	43
The Options Tab	44
HTML Editor	44
Browser Width	44
Save Options and Defaults	45
The File Chooser	45
Directory	45
Directory Buttons	45
File List	45
Filename	46
Dialog Buttons	46
 Chapter 8 – Command–Line Reference	 47
Basic Usage	47
Options	47
–d directory	48
–f filename	48
–t format	48
–v	48
–bodycolor color	48
–bodyfont typeface	48
–bodyimage filename	49

Table of Contents

<u>--book</u>	49
<u>--bottom margin</u>	49
<u>--browserwidth pixels</u>	49
<u>--charset charset</u>	49
<u>--color</u>	50
<u>--compression[=level]</u>	50
<u>--datadir directory</u>	50
<u>--duplex</u>	50
<u>--effectduration seconds</u>	50
<u>--firstpage page</u>	51
<u>--fontsize size</u>	51
<u>--fontspacing spacing</u>	51
<u>--footer lcr</u>	51
<u>--format format</u>	52
<u>--gray</u>	52
<u>--header</u>	52
<u>--headfootfont font</u>	53
<u>--headfootsize size</u>	53
<u>--headingfont typeface</u>	53
<u>--help</u>	54
<u>--helpdir directory</u>	54
<u>--jpeg[=quality]</u>	54
<u>--landscape</u>	54
<u>--left margin</u>	54
<u>--logoimage filename</u>	54
<u>--no-compression</u>	55
<u>--no-pscommands</u>	55
<u>--no-title</u>	55
<u>--no-toc</u>	55
<u>--numbered</u>	55
<u>--outdir directory</u>	55
<u>--outfile filename</u>	55
<u>--pageduration seconds</u>	55
<u>--pageeffect effect</u>	55
<u>--pagelayout layout</u>	56
<u>--pagemode mode</u>	57
<u>--portrait</u>	57
<u>--pscommands</u>	57
<u>--right margin</u>	57
<u>--size size</u>	57
<u>--textcolor color</u>	58
<u>--textfont typeface</u>	58
<u>--title</u>	58
<u>--titleimage filename</u>	58
<u>--tocfooter lcr</u>	58
<u>--tocheader lcr</u>	59
<u>--toclevels levels</u>	60

Table of Contents

<u>--top margin</u>	60
<u>--verbose</u>	60
<u>--webpage</u>	60
<u>Appendix A – GNU General Public License</u>	61

Introduction

This document describes how to use the *HTMLDOC* software, version 1.8. *HTMLDOC* converts Hyper-Text Markup Language ("HTML") input files into indexed HTML, Adobe® PostScript®, or Adobe Portable Document Format ("PDF") files.

HTMLDOC supports most HTML 3.2 elements, some HTML 4.0 elements, and can generate a title page and table of contents pages.

HTMLDOC can be used as a standalone application, in a batch document processing environment, or as a web-based report generation application.

No restrictions are placed upon the output produced by *HTMLDOC*.

History

Like many programs *HTMLDOC* was developed in response to a need our company had for generating high-quality documentation in printed and electronic forms. For a while we used FrameMaker® and a package from *sgi* that generated "compiled" Standard Generalized Markup Language ("SGML") files that could be used by the Electronic Book Technologies ("EBT") documentation products (EBT is now owned by [INSO](#).) When *sgi* stopped supporting these tools we turned to INSO, but the cost of their tools is prohibitive to small businesses.

In the end we decided to write our own program to generate our documentation. HTML seemed to be the source format of choice since WYSIWYG HTML editors are widely (and freely) available and at worst you can use a plain text editor. We needed HTML output for documentation on our web server, PDF for

customers to read and/or print from their computers, and PostScript for our own printing needs.

The result of our efforts is the *HTMLDOC* software which is available for UNIX® and Microsoft® Windows®. Among other things, this software users manual is produced using *HTMLDOC*.

Organization of This Manual

This manual is organized into tutorial and reference chapter:

- [Chapter 1](#) – Installing HTMLDOC
- [Chapter 2](#) – Getting Started
- [Chapter 3](#) – Generating Books
- [Chapter 4](#) – HTMLDOC from the Command-Line
- [Chapter 5](#) – HTMLDOC from a Web Server
- [Chapter 6](#) – HTML Reference
- [Chapter 7](#) – GUI Reference
- [Chapter 8](#) – Command-Line Reference
- [Appendix A](#) – GNU General Public License

Support

Commercial support is available from Easy Software Products for \$99 US per year per system. Information can be found at the *HTMLDOC* web page, "<http://www.easysw.com/htmldoc>".

Copyright, Trademark, and License Information

The Adobe Portable Document Format is Copyright 1993–1999 by Adobe Systems Incorporated. Adobe, FrameMaker, and PostScript are registered trademarks of Adobe Systems, Incorporated.

The Graphics Interchange Format is the copyright and GIFSM is the service mark property of CompuServe Incorporated.

Compaq, Digital, and Tru64 are registered trademarks of Compaq.

Intel is a registered trademark of Intel Corporation.

IRIX and sgi are registered trademarks of sgi.

Linux is a registered trademark of Linus Torvalds.

Microsoft, Windows, Windows 95, Windows 98, and Windows NT are registered trademarks of Microsoft Corporation.

Red Hat and RPM are registered trademarks of Red Hat, Inc.

Solaris is a registered trademark of Sun Microsystems, Inc.

SPARC is a registered trademark of SPARC International, Inc.

UNIX is a registered trademark of the X/Open Company, Ltd.

HTMLDOC is copyright 1997–1999 by Easy Software Products. This program is free software; you can redistribute it and/or modify it under the terms of the GNU General Public License as published by the Free Software Foundation; either version 2 of the License, or (at your option) any later version.

This program is distributed in the hope that it will be useful, but WITHOUT ANY WARRANTY; without even the implied warranty of MERCHANTABILITY or FITNESS FOR A PARTICULAR PURPOSE. See the [GNU General Public License](#) for more details.

A copy of the GNU General Public License is included in [Appendix A](#) of this manual. If this appendix is missing from your copy of HTMLDOC, write to the Free Software Foundation, Inc., 59 Temple Place – Suite 330, Boston, MA 02111–1307, USA.

This software is based in part on the work of the Independent JPEG Group.

Chapter 1 – Installing HTMLDOC

This chapter describes the steps needed to install *HTMLDOC* on your system from any of the source or binary distributions.

Installing a Binary Distribution

HTMLDOC binary distributions are available for a number of UNIX and Windows platforms.

Requirements

HTMLDOC requires approximately 2MB of disk space and one of the following environments:

- Compaq Tru64 UNIX 4.0 or higher
- Digital UNIX 4.0 or higher
- HP-UX 10.20 or higher
- IRIX 5.3 or higher
- Linux 2.0 or higher
- Microsoft Windows 95
- Microsoft Windows 98
- Microsoft Windows NT 4.0
- Red Hat Linux 5.2 or higher
- Solaris 2.5 or higher

Installing HTMLDOC under Red Hat Linux

Run the following command to install *HTMLDOC* under Red Hat Linux:

```
% rpm -i htmdoc-1.8-linux-2.0.36-intel.rpm ENTER
```

Uninstalling HTMLDOC under Red Hat Linux

Run the following command to remove *HTMLDOC* from your Red Hat Linux system:

```
% rpm -r htmdoc ENTER
```

Installing HTMLDOC under UNIX

Run the following commands to install *HTMLDOC* under UNIX:

```
% gunzip htmdoc-1.8-platform.tar.gz ENTER  
% tar xf htmdoc-1.8-platform.tar ENTER  
% ./setup ENTER
```

Substitute the correct platform string as needed.

Uninstalling HTMLDOC under UNIX

Run the following command to remove *HTMLDOC* from your UNIX system:

```
% /etc/software/htmdoc.remove ENTER
```

Installing HTMLDOC under Windows

HTMLDOC is provided in a self-extracting installation file under Windows. Double-click on the setup icon to install *HTMLDOC* under Windows.

Uninstalling HTMLDOC under Windows

Open the Control Panel window and double-click on the Add/Remove Software icon. When the available software list is displayed, select *HTMLDOC* and click on the Remove button.

Installing HTMLDOC from the Source Distribution

The complete source to *HTMLDOC* is available to build *HTMLDOC* for different directories, architectures, or operating systems.

Requirements

HTMLDOC requires ANSI C and C++ compilers (GCC/EGCS work fine.) To build the GUI you'll also need:

- [Fast Light Tool Kit \("FLTK"\)](#), version 1.0 or newer.
- [X11 libraries](#), R5 or higher (needed to build under UNIX and OS/2 only.)

Configuring the UNIX Source

HTMLDOC uses a configuration script produced by GNU autoconf to configure itself for your system. If your ANSI C compiler is not called *cc* or *gcc*, set the CC environment variable to the name and path of your ANSI C compiler:

```
% setenv CC /path/to/compiler          [C Shell]
% CC=/path/to/compiler; export CC      [Bourne/Korn Shell]
```

Similarly, if your C++ compiler is not called *CC*, *gcc*, *c++*, or *g++*, set the CXX environment variable to the name and path of your C++ compiler:

```
% setenv CXX /path/to/compiler         [C Shell]
% CXX=/path/to/compiler; export CXX    [Bourne/Korn Shell]
```

Finally, if the FLTK library is not installed in a standard location for your compilers, set the CFLAGS, CXXFLAGS, and LDFLAGS environment variables to point to the FLTK library:

```
% setenv CFLAGS -I/path/to/fltk        [C Shell]
% setenv CXXFLAGS -I/path/to/fltk
% setenv LDFLAGS -L/path/to/fltk/lib

% CFLAGS=-I/path/to/fltk; export CFLAGS [Bourne/Korn Shell]
% CXXFLAGS=-I/path/to/fltk; export CXXFLAGS
% LDFLAGS=-L/path/to/fltk/lib; export LDFLAGS
```

Then run the following command to configure *HTMLDOC* for installation in the default directories:

```
% ./configure ENTER
```

The default configuration will install *HTMLDOC* in the */usr/bin* directory with the data files under */usr/share/htmldoc* and the documentation and on-line help under */usr/share/doc/htmldoc*. Use the *--prefix* option to change the installation prefix to */usr/local*:

```
% ./configure --prefix=/usr/local ENTER
```

Compiling under UNIX

HTMLDOC is built from a Makefile in the distribution's main directory. Simply run the "make" command to build *HTMLDOC*:

```
% make ENTER
```

If you get any fatal errors please send a copy of the make/compiler output to "htmldoc-support@easysw.com" for assistance. Please note the version of *HTMLDOC* that you are using as

well as any pertinent system information (operating system, OS version, compiler, etc.)

Installing under UNIX

To install *HTMLDOC* simply run the "make install" command as root:

```
% make install ENTER
```

Compiling with Visual C++

A Visual C++ 6.0 workspace file and associated project files are included in the source distribution under the "visualc" directory. Open the workspace file "html.doc.dsw", adjust the FLTK include and project file locations, and then build the HTMLDOC target.

Installing with Visual C++

The Windows installation package is created using InstallShield for Visual C++ 6. The "visualc/HTMLDOC" directory contains the installation information for *HTMLDOC* needed to build a binary distribution with InstallShield.

To install *HTMLDOC* without InstallShield, create an installation directory and copy the *html.doc.exe* executable, the *afm* directory, the *data* directory, and the *doc* directory to it.

Then use the *regedit* program to create the following two string entries:

```
HKEY_LOCAL_MACHINE\Software\Easy Software Products\HTMLDOC\data
```

```
C:\installation\directory
```

```
HKEY_LOCAL_MACHINE\Software\Easy Software Products\HTMLDOC\doc
```

```
C:\installation\directory\doc
```


Chapter 2 – Getting Started

This chapter describes how to start *HTMLDOC* and convert HTML files into PostScript and PDF files.

Starting HTMLDOC

To start *HTMLDOC* under UNIX type:

```
% htmldoc ENTER
```

Choose *HTMLDOC* from the *Start* menu to start *HTMLDOC* under Windows.

Choosing a HTML File

The *HTMLDOC* window (Figure 2–1) shows the list of input files that will be converted. Start by clicking on the *Web Page* radio button (1) to specify you'll be converting a single HTML file.

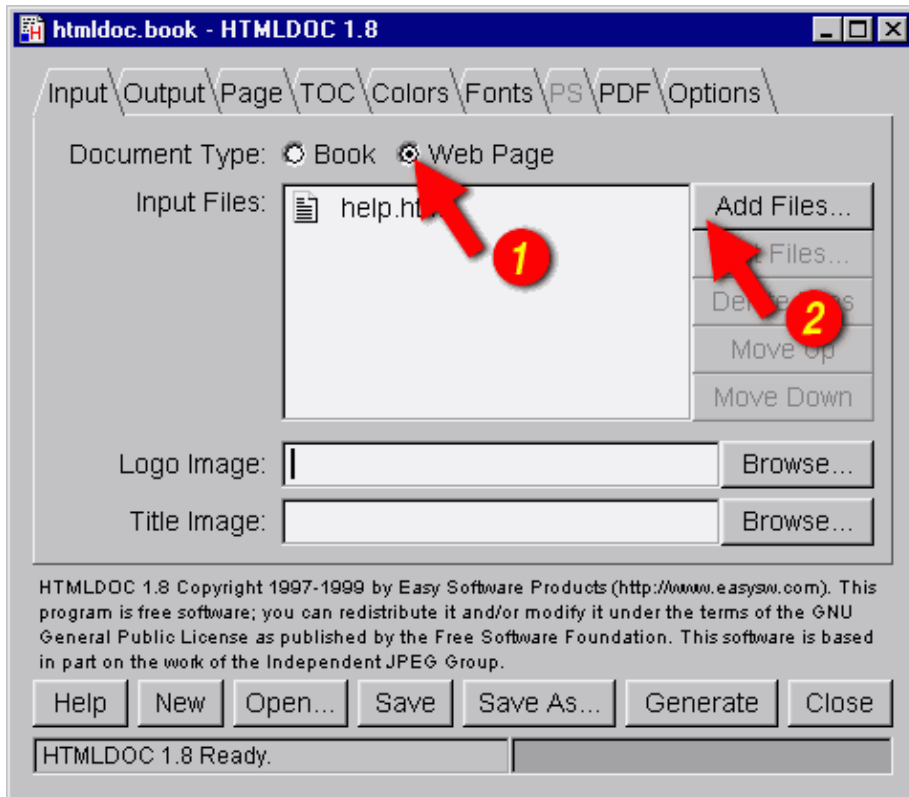


Figure 2-1 – The HTMLDOC Window

Then choose a file for conversion by clicking on the *Add Files...* button (2). When the file chooser dialog appears (Figure 3), double-click on the HTML file (3) you wish to convert from the list of files.

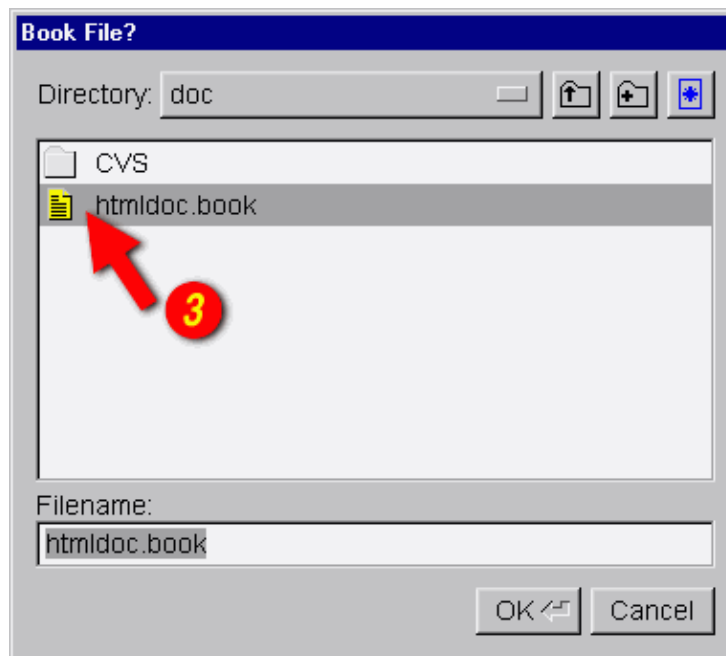


Figure 2-2 – The File Chooser Dialog

Setting the Output File

Now that you've chosen a HTML file to convert, click on the *Output* tab (4) to set the output file (Figure 2–3). Type the name of the output file into the *Output Path* field or click on the *Browse...* button (5) to select the output file using the file chooser.

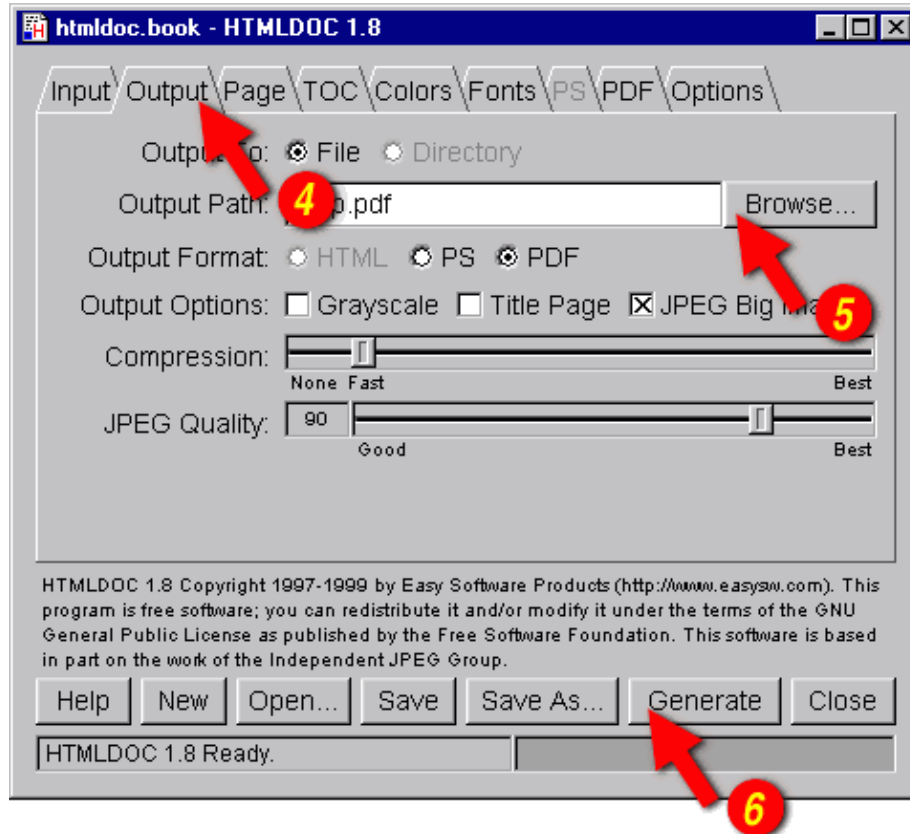


Figure 2–3 – The Output Tab

Generating the Document

Once you have chosen the output file you can generate it by clicking on the *Generate* button (6) at the bottom of the *HTMLDOC* window. When the conversion is completed you can open the PDF file that is produced using Adobe Acrobat Reader or any other PDF viewing application.

Chapter 3 – Generating Books

This chapter describes how to generate whole books from HTML files.

Overview

While *HTMLDOC* can convert web pages into PostScript and PDF files, its real strength is generating index HTML, PostScript, or PDF books.

HTMLDOC uses HTML heading elements to delineate chapters and headings in a book. The H1 element is used for chapters:

```
<HTML>
<HEAD>
  <TITLE>The Little Computer that Could</TITLE>
</HEAD>
<BODY>
  <H1>Chapter 1 - The Little Computer is Born</H1>
  ...
  <H1>Chapter 2 - Little Computer's First Task</H1>
  ...
</BODY>
</HTML>
```

Sub-headings are marked using the H2 through H6 elements.

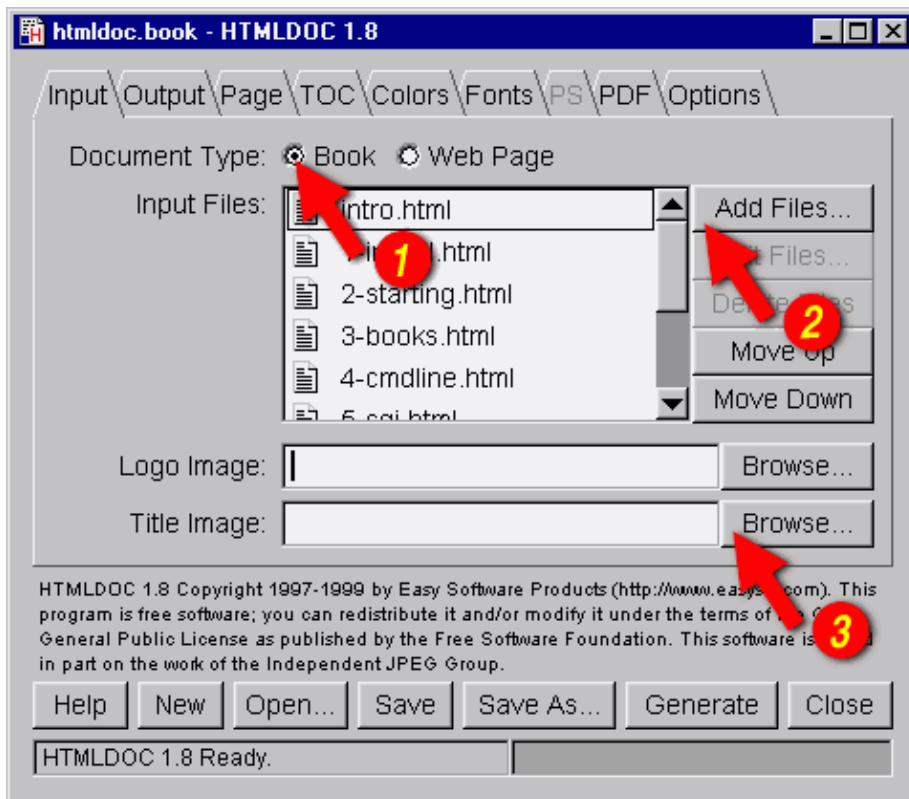


Figure 3–1: The Input Tab

Choosing HTML Files

Start by clicking on the *Book* radio button (1) to specify you'll be converting a one or more HTML files into a book.

Then choose one or more files for conversion by clicking on the *Add Files...* button (2). When the file chooser dialog appears, pick the file(s) you wish to convert from the list of files and then click on the *OK* button.

Selecting a Title Image

HTMLDOC supports generation of a title page with an image, the title text, and other META information on it. Type the title image filename into the *Title Image* field or click on the *Browse...* button (3) to select a title image for your book.

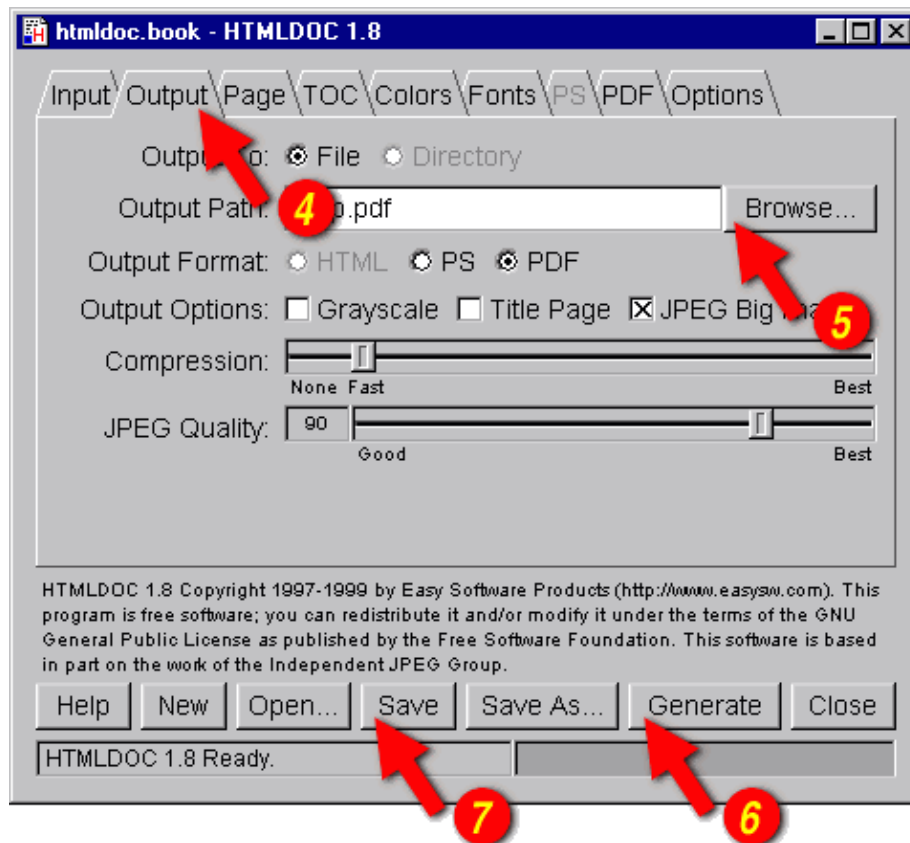


Figure 3–2: The Output Tab

Setting the Output Format

The output format is set in the *Output* tab (4). Click on the *Output* tab and then click on the *HTML*, *PS*, or *PDF* radio buttons to set the output format.

Setting the Output File

Now that you've chosen an output format, type the name of the output file into the *Output Path* field or click on the *Browse...* button (5) to select the output file using the file chooser.

Generating the Document

Once you have chosen the output file you can generate it by clicking on the *Generate* button (6) at the bottom of the *HTMLDOC* window.

Saving Your Book

HTMLDOC can save the list of HTML files, the title image, and all other options to a special `.BOOK` file so you can regenerate your book when you make changes to your HTML files.

Click on the **Save** button (7) to save the current book to a file.

Chapter 4 – HTMLDOC from the Command-Line

This chapter describes how to use *HTMLDOC* from the command-line to convert web pages and generate books.

Converting Web Pages

To convert a web page type:

```
% htmldoc --webpage -f output.pdf filename.html ENTER
% htmldoc --webpage -f output.ps filename.html ENTER
```

The "--webpage" option tells *HTMLDOC* that you want to convert a web page or other unstructured document.

The "-f" option tells *HTMLDOC* what file to generate. If you don't specify an output file then a PDF file is sent to the standard output.

Generating Books

To generate a book from one or more HTML files type:

```
% htmldoc --book -f output.html filename.html ENTER
% htmldoc --book -f output.pdf filename.html ENTER
% htmldoc --book -f output.ps filename.html ENTER
```

The "--book" option tells *HTMLDOC* that you want to generate a book from the HTML file(s) you specified.

Setting the Title Image

The --titleimage sets the image to use on the title page:

```
% htmldoc --titleimage filename.gif ... ENTER
% htmldoc --titleimage filename.jpg ... ENTER
% htmldoc --titleimage filename.png ... ENTER
```

HTMLDOC supports GIF, JPEG, and PNG images.

Chapter 5 – Using HTMLDOC on a Web Server

This chapter describes how to interface HTMLDOC to your web server using CGI scripts and programs.

The Basics

HTMLDOC can be used in a variety of ways to generate formatted reports on a web server. The most common way is to combine *HTMLDOC* with a CGI script or program and send the output to the HTTP client.

To make this work the CGI script or program must send the appropriate HTTP attributes, the required empty line to signify the beginning of the document, and then execute the *HTMLDOC* program to generate the HTML, PostScript, or PDF file as needed.

Calling HTMLDOC from a Shell Script

Shell scripts are probably the easiest to work with, but are normally limited to GET type requests. Here is a script called *topdf.cgi* that will convert the named HTML file to PDF:

```
#!/bin/sh

docroot=/insert/directory/here
cd $docroot

echo "Content-Type: application/pdf"
echo ""

htmldoc -t pdf --webpage $1
```

Users of this CGI would reference the URL "http://www.domain.com/topdf.cgi?index.html" to generate a PDF file of the site's home page.

You can update the script to use the `PATH_TRANSLATED` environment variable so that URLs like "http://www.domain.com/cgi-bin/topdf/index.html" work as well:

```
#!/bin/sh

docroot=`dirname $PATH_TRANSLATED`
cd $docroot

echo "Content-Type: application/pdf"
echo ""

htmldoc -t pdf --webpage $PATH_TRANSLATED
```

Calling HTMLDOC from Perl

Perl scripts offer the ability to generate more complex reports, pull data from databases, etc. The easiest way to interface Perl scripts with *HTMLDOC* is to write a report to a temporary file and then execute *HTMLDOC* to generate the PDF file.

Here is a simple Perl subroutine that can be used to write a PDF report to the HTTP client:

```
sub topdf(filename);

sub topdf {
    print "Content-Type: application/pdf\n\n"
    system htmldoc -t pdf --webpage $filename
}
```

Calling HTMLDOC from C

C programs offer the best flexibility and easily support on-the-fly report generation without the need for temporary files.

Here are some simple C functions that can be used to generate a PDF report to the HTTP client from a temporary file or pipe:

```
#include <stdio.h>
#include <stdlib.h>

/* topdf() - convert a HTML file to PDF */
FILE *topdf(const char *filename) /* HTML file to convert */
{
    char command[1024];           /* Command to execute */

    puts("Content-Type: application/pdf\n");

    sprintf(command, "htmldoc -t pdf --webpage %s", filename);

    return (popen(command, "w"));
```

```
}

/* topdf2() - pipe HTML output to HTMLDOC for conversion to PDF */
FILE *topdf2(void)
{
    puts("Content-Type: application/pdf\n");
    return (popen("htmldoc -t pdf --webpage -", "w"));
}
```


Chapter 6 – HTML Reference

This chapter defines all of the HTML elements and attributes that are recognized and supported by *HTMLDOC*.

Elements

The following HTML elements are recognized by *HTMLDOC*:

Element	Version	Supported?	Notes
!DOCTYPE	3.0	Yes	DTD is ignored
A	1.0	Yes	See Below
ACRONYM	2.0	Yes	No font change
ADDRESS	2.0	Yes	
APPLET	4.0	No	
AREA	2.0	No	
B	1.0	Yes	
BASE	2.0	No	
BASEFONT	1.0	No	
BIG	2.0	Yes	

BLINK	2.0	No	
BLOCKQUOTE	2.0	Yes	
BODY	1.0	Yes	
BR	2.0	Yes	
CAPTION	2.0	Yes	See Below
CENTER	2.0	Yes	
CITE	2.0	Yes	Italic/Oblique
CODE	2.0	Yes	Courier
COL	4.0	No	
COLGROUP	4.0	No	
DD	2.0	Yes	
DEL	2.0	Yes	Strikethrough
DFN	2.0	Yes	Helvetica
DIR	2.0	Yes	
DIV	3.2	Yes	
DL	2.0	Yes	
DT	2.0	Yes	Italic/Oblique
EM	2.0	Yes	Italic/Oblique
EMBED	2.0	Yes	HTML Only
FONT	2.0	Yes	See Below
FORM	2.0	No	
FRAME	3.2	No	
FRAMESET	3.2	No	
H1	1.0	Yes	Boldface, See Below
H2	1.0	Yes	Boldface, See Below
H3	1.0	Yes	Boldface, See Below
H4	1.0	Yes	Boldface, See Below
H5	1.0	Yes	Boldface, See Below
H6	1.0	Yes	Boldface, See Below
HEAD	1.0	Yes	
HR	1.0	Yes	See Below
HTML	1.0	Yes	
I	1.0	Yes	

IMG	1.0	Yes	GIF, JPEG, PNG
INPUT	2.0	No	
INS	2.0	Yes	Underline
ISINDEX	2.0	No	
KBD	2.0	Yes	Courier Bold
LI	2.0	Yes	
LINK	2.0	No	
MAP	2.0	No	
MENU	2.0	Yes	
META	2.0	Yes	See Below
MULTICOL	N3.0	No	
NOBR	1.0	No	
NOFRAMES	3.2	No	
OL	2.0	Yes	
OPTION	2.0	No	
P	1.0	Yes	
PRE	1.0	Yes	
S	2.0	Yes	Strikethrough
SAMP	2.0	Yes	Courier
SCRIPT	2.0	No	
SELECT	2.0	No	
SMALL	2.0	Yes	
SPACER	N3.0	Yes	
STRIKE	2.0	Yes	
STRONG	2.0	Yes	Boldface Italic/Oblique
STYLE	4.0	No	
SUB	2.0	Yes	Reduced Fontsize
SUP	2.0	Yes	Reduced Fontsize
TABLE	2.0	Yes	See Below
TBODY	4.0	No	
TD	2.0	Yes	
TEXTAREA	2.0	No	
TFOOT	4.0	No	

TH	2.0	Yes	Boldface Center
THEAD	4.0	No	
TITLE	2.0	Yes	
TR	2.0	Yes	
TT	2.0	Yes	Courier
U	1.0	Yes	
UL	2.0	Yes	
VAR	2.0	Yes	Helvetica Oblique
WBR	1.0	No	

Comments

HTMLDOC supports three special HTML comments to initiate page breaks:

```
<!-- PAGE BREAK -->
```

Break to the next page.

```
<!-- NEW PAGE -->
```

Break to the next page.

```
<!-- NEW SHEET -->
```

Break to the next sheet.

FONT Attributes

Limited typeface specification is currently supported to ensure portability across platforms and for older PostScript printers:

Requested Font	Actual Font
Arial	Helvetica
Courier	Courier
Helvetica	Helvetica
Monospace	Courier
Sans-Serif	Helvetica
Serif	Times
Symbol	Symbol

Times	Times
-------	-------

All other unrecognized typefaces are silently ignored.

Headings

Currently *HTMLDOC* supports a maximum of 10000 headings and 100 chapters. These limits can be increased by changing the constants in the *config.h* file included with the source code.

All chapters start with a top-level heading (H1) markup. Any headings within a chapter must be of a lower level (H2 to H6). Each chapter starts a new page or the next odd-numbered page if duplexing is selected.

The headings you use within a chapter must start at level 2 (H2). If you skip levels the heading will be shown under the last level that was known. For example, if you use the following hierarchy of headings:

```
<H1>Chapter Heading</H1>
...
<H2>Section Heading 1</H2>
...
<H2>Section Heading 2</H2>
...
<H3>Sub-Section Heading 1</H3>
...
<H4>Sub-Sub-Section Heading 1</H4>
...
<H4>Sub-Sub-Section Heading 2</H4>
...
<H3>Sub-Section Heading 2</H3>
...
<H2>Section Heading 3</H2>
...
<H4>Sub-Sub-Section Heading 3</H4>
...
```

the table-of-contents that is generated will show:

Chapter Heading

- ◆ Section Heading 1
- ◆ Section Heading 2
 - ◇ Sub-Section Heading 1
 - Sub-Sub-Section Heading 1
 - Sub-Sub-Section Heading 2
 - ◇ Sub-Section Heading 2
 - Sub-Sub-Section Heading 3
- ◆ Section Heading 3

Numbered Headings

When the numbered headings option is enabled, *HTMLDOC* recognizes the following additional attributes for all heading elements:

VALUE=" # "

Specifies the starting value for this heading level (default is "1" for all new levels).

TYPE=" 1 "

Specifies that decimal numbers should be generated for this heading level.

TYPE=" a "

Specifies that lowercase letters should be generated for this heading level.

TYPE=" A "

Specifies that uppercase letters should be generated for this heading level.

TYPE=" i "

Specifies that lowercase roman numerals should be generated for this heading level.

TYPE=" I "

Specifies that uppercase roman numerals should be generated for this heading level.

Links

Currently *HTMLDOC* supports a maximum of 20000 links within a document. This limit can be increased by changing the constant in the *config.h* file included with the source code.

External URL links are fully supported for HTML and PDF output, and internal links (`#target` and `filename.html`) are supported in HTML and PDF output.

When generating PDF files, local PDF file links will be converted to external file links for the PDF viewer instead of URL links. That is, you can directly link to another local PDF file from your HTML document with:

```
<A HREF="filename.pdf">...</A>
```

META Attributes

HTMLDOC supports the following META attributes for the title page and document information:

```
<META NAME="AUTHOR" CONTENT=" . . . "
```

Specifies the document author.

```
<META NAME="COPYRIGHT" CONTENT=" . . . "
```

Specifies the document copyright.

```
<META NAME="DOCNUMBER" CONTENT=" . . . ">
```

Specifies the document number.

```
<META NAME="GENERATOR" CONTENT=" . . . ">
```

Specifies the application that generated the HTML file.

Page Breaks

HTMLDOC supports three new [page comments](#) to specify page breaks. In addition, the older BREAK attribute is still supported by the HR element:

```
<HR BREAK>
```

Support for the BREAK attribute is deprecated and will be removed in a future release of *HTMLDOC*.

Tables

Currently *HTMLDOC* supports a maximum of 100 columns and 1000 rows within a single table. These limits can be increased by changing the constants in the *config.h* file included with the source code.

HTMLDOC supports HTML 3.0 tables with the following exceptions:

- The CAPTION element is always shown at the top of the table.
- The ROWSPAN attribute is ignored.
- The VALIGN attribute is ignored.

Chapter 7 – GUI Reference

This chapter describes all of the GUI controls in *HTMLDOC*.

The HTMLDOC GUI

The *HTMLDOC* GUI (Figures 7–1 through 7–9) is contained in a single window showing the input, output, and generation options. At the bottom are buttons to load, save, and generate documents.

Document File Operations

HTMLDOC stores the HTML files, settings, and options in .BOOK files. The buttons on the bottom of the *HTMLDOC* window allow you manage these files and generate formatted documents.

New

The *New* button starts a new document. A confirmation dialog will appear if you have not saved the changes to the existing document.

Open...

The *Open...* button retrieves a document that you have saved previously. A [file chooser](#) dialog is displayed that allows you to pick an existing book file.

Save

The **Save** button saves the current document. A [file chooser](#) dialog is displayed if there is no filename assigned to the current document.

Note: Saving a document is not the same as *generating* a document. The book files saved to disk by the **Save** and **Save As...** buttons are *not* the final HTML, PDF, or PostScript output files. You generate those files by clicking on the **Generate** button.

Save As...

The **Save As...** button saves the current document to a new file. A [file chooser](#) dialog is displayed to allow you to specify the new document filename.

Note: Saving a document is not the same as *generating* a document. The book files saved to disk by the **Save** and **Save As...** buttons are *not* the final HTML, PDF, or PostScript output files. You generate those files by clicking on the **Generate** button.

Generate

The **Generate** button generates the current document, creating the specified HTML, PDF, or PostScript file(s) as needed. The progress meter at the bottom of the window will show the progress as each page or file is formatted and written.

Note: Generating a document is not the same as *saving* a document. To save the current HTML files and settings in the *HTMLDOC* GUI, click on the **Save** or **Save As...** buttons instead.

Close

The **Close** button closes the *HTMLDOC* window.

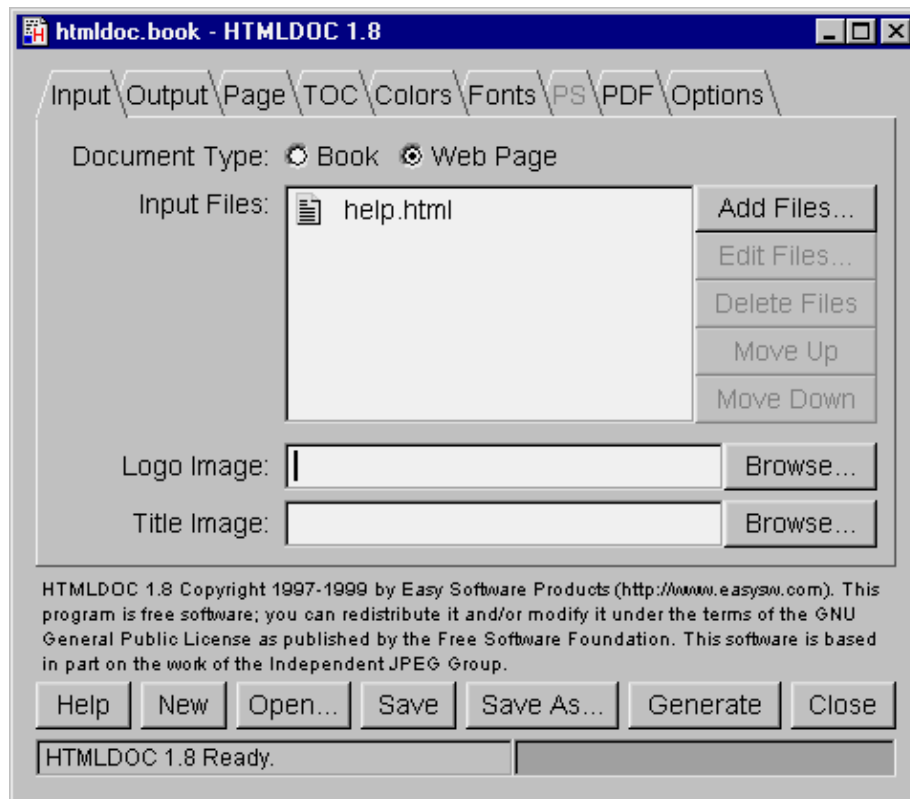


Figure 7-1 – The Input Tab

The Input Tab

The input tab (Figure 7-1) lists all of the HTML source files that are used to generate the document. You also specify the type of document (book or web page) and the title and logo images in this tab.

Document Type

The *Book* radio button specifies that the input files are structured with headings. The *Web Page* radio button specifies unstructured files.

Input Files

The *Input Files* list shows all of the HTML input files that will be used to produce the document. Double-click on files to edit them.

Add Files...

The *Add Files...* button displays the [file chooser](#) dialog, allowing you to select one or more HTML files to include in the document.

Edit Files...

The *Edit Files...* button starts the specified editor program to edit the files selected in the *Input Files* list. Select one or more files in the *Input Files* list to enable the *Edit Files...* button.

Delete Files

The *Delete Files* button removes the selected files from the *Input Files* list. Select one or more files in the *Input Files* list to enable the *Delete Files* button.

The *Delete Files* button only removes the files from the *Input Files* list. The files are *not* removed from disk.

Move Up

The *Move Up* button moves the selected files in the *Input Files* list up one line in the list. To enable the *Move Up* button select one or more files in the *Input Files* list.

Move Down

The *Move Down* button moves the selected files in the *Input Files* list down one line in the list. To enable the *Move Down* button select one or more files in the *Input Files* list.

Logo Image

The *Logo Image* field contains the filename for an image to be shown in the header or footer of pages, and in the navigation bar of HTML files.

Click on the *Browse...* button to select a logo image file using the [file chooser](#) dialog.

Title Image

The *Title Image* field contains the filename for an image to be shown on the title page.

Click on the *Browse...* button to select a title image file using the [file chooser](#) dialog.

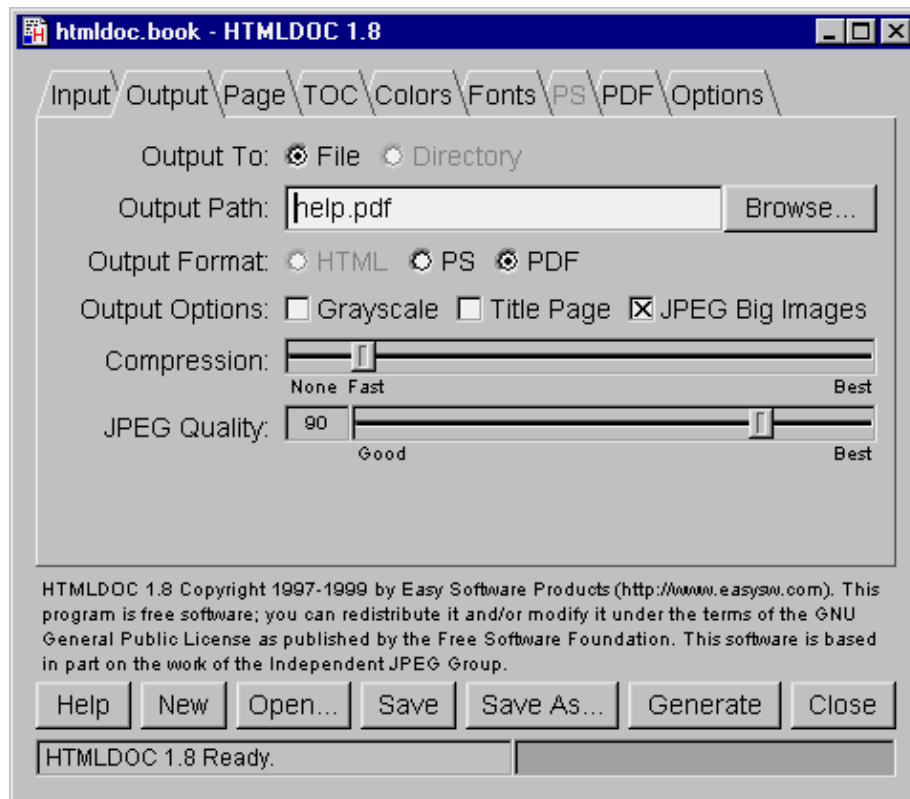


Figure 7–2 – The Output Tab

The Output Tab

The output tab (Figure 7–2) specifies where your document will be generated, the output format, and some of the generic output options.

Output To

The *File* radio button selects output to a single file. The *Directory* radio button selects output to multiple files in the named directory.

Directory output is not available when generating PDF files.

Output Path

The *Output Path* field contains the output directory or filename. Click on the *Browse...* button to choose an output file using the [file chooser](#) dialog.

Output Format

The *HTML* radio button selects HTML output, the *PS* radio button selects PostScript output, and the *PDF* radio button selects PDF output.

Output Options

The *Grayscale* check box selects grayscale output for PostScript and PDF files. The *Title Page* check box specifies that a title page should be generated for the document. The *JPEG Big Images* check box specifies that JPEG compression should be applied to continuous-tone images.

Compression

The *Compression* slider controls the amount of Flate compression that is used when writing PDF or Level 3 PostScript output.

JPEG Quality

The *JPEG Quality* slider controls the quality level used when JPEG compressing continuous-tone images.

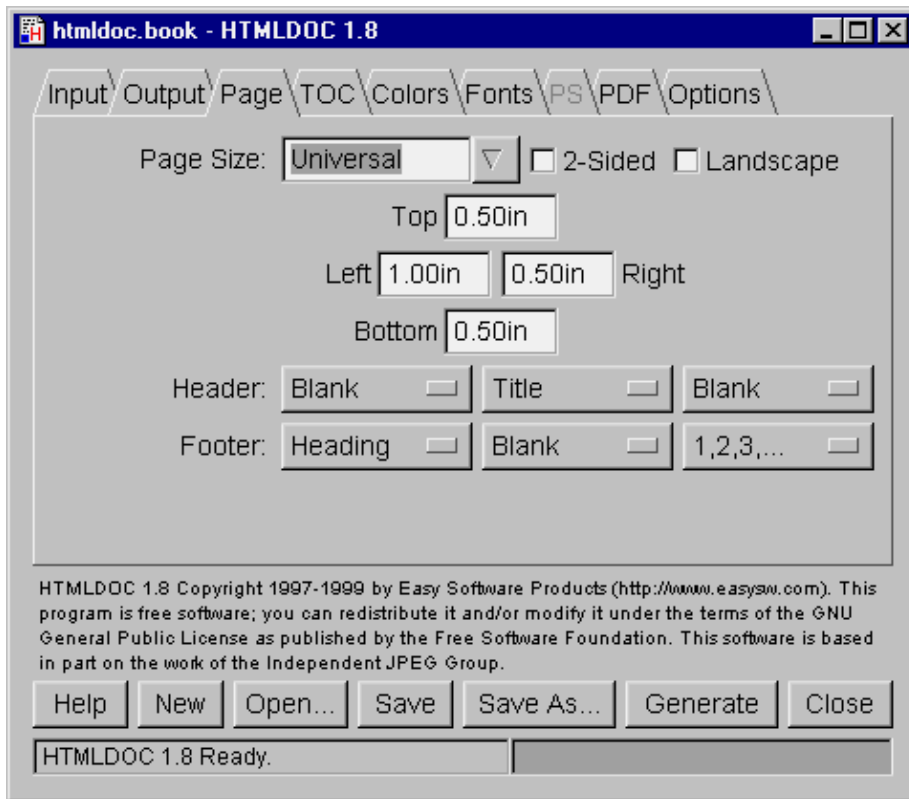


Figure 7-3 – The Page Tab

The Page Tab

The page tab (Figure 7-3) defines the page header, footer, size, and margins for PostScript and PDF output.

Page Size

The *Page Size* field contains the current page size. Click on the arrow button to choose a standard page size.

HTMLDOC supports the following standard page size names:

- Letter – 8.5x11in (216x279mm)
- A4 – 8.27x11.69in (210x297mm)
- Universal – 8.27x11in (210x279mm)

Click in the *Page Size* field and enter the page width and length separated by the letter "x" to select a custom page size. Append the letters "in" for inches, "mm" for millimeters, or "cm" for centimeters.

2-Sided

Click in the *2-Sided* check box to select 2-sided (duplexed) output.

Landscape

Click in the *Landscape* check box to select landscape output.

Top, Left, Right, and Bottom

Click in the *Top*, *Left*, *Right*, and *Bottom* fields and enter the new margin values to change them. Append the letters "in" for inches, "mm" for millimeters, or "cm" for centimeters.

Header and Footer

Select the desired text in each of the option buttons to customize the header and footer for the document/body pages. The leftmost option buttons set the text that is left-justified, while the middle buttons set the text that is centered and the right buttons set the text that is right-justified.

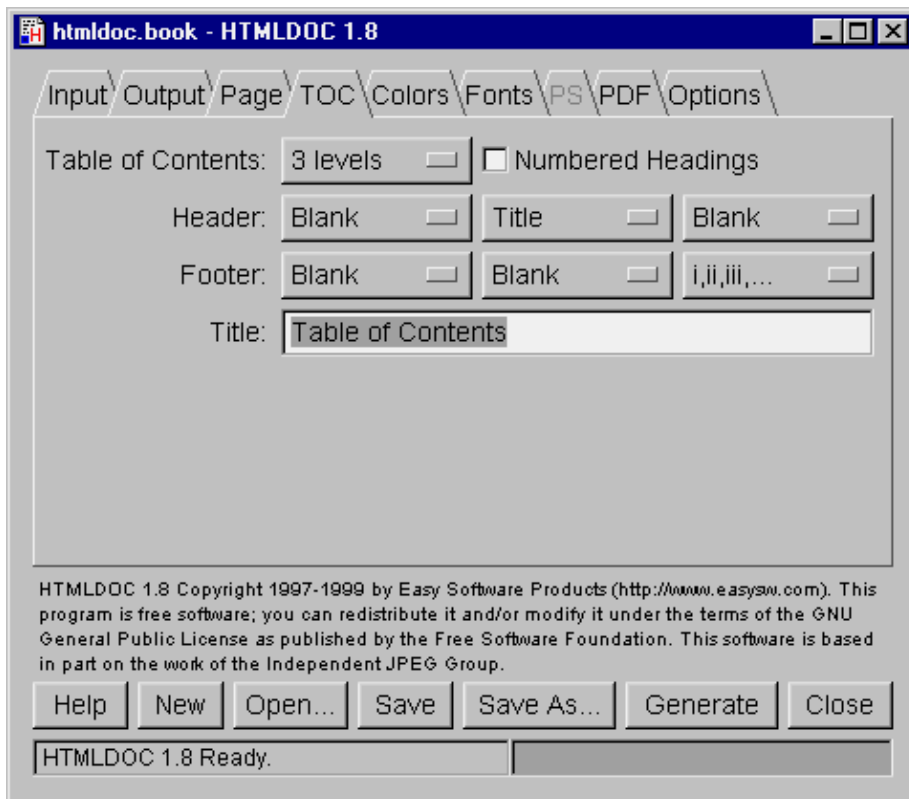


Figure 7-4 – The TOC Tab

The TOC Tab

The TOC tab (Figure 7-4) defines the table-of-contents options.

Table of Contents

Select the desired number of levels from the *Table of Contents* option button.

Numbered Headings

Click in the *Numbered Headings* check box to automatically number the headings in the document.

Header and Footer

Select the desired text in each of the option buttons to customize the header and footer for the tables-of-contents pages. The leftmost option buttons set the text that is left-justified, while the middle buttons set the text that is centered and the right buttons set the text that is right-justified.

Title

Enter the desired title for the table-of-contents in the *Title* field.

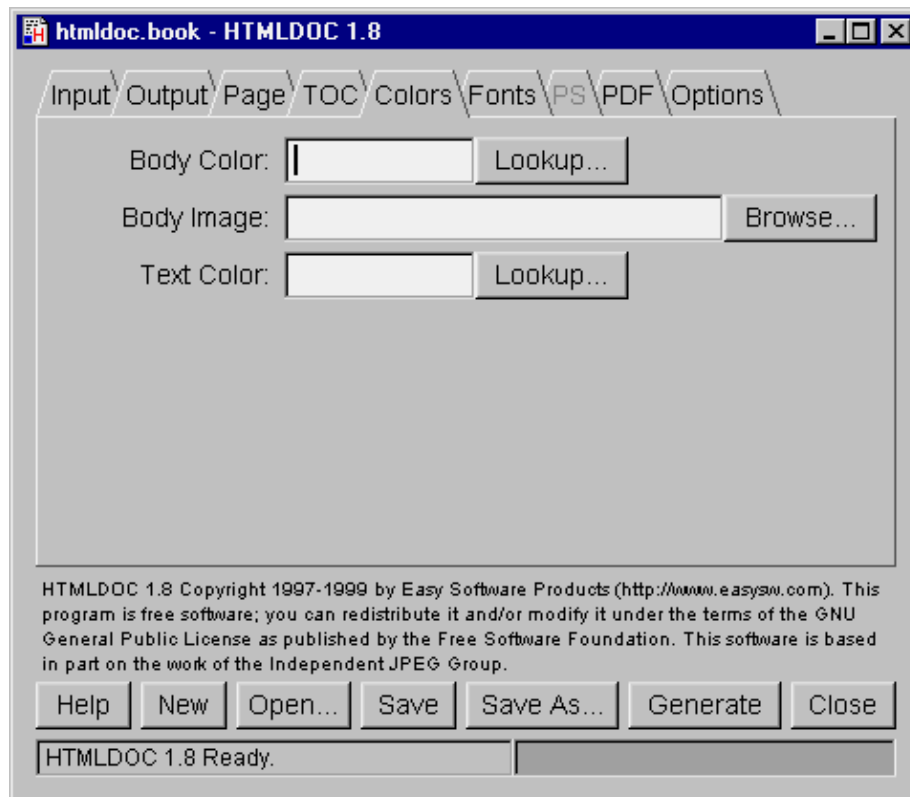


Figure 7-5 – The Colors Tab

The Colors Tab

The colors tab (Figure 7-5) defines the color and image information that is used for the entire document.

Body Color

The *Body Color* field specifies the default background color. It can be a standard HTML color name or a hexadecimal RGB color of the form #RRGGBB. Click on the *Lookup...* button to pick the color graphically.

Body Image

The *Body Image* field specifies the default background image. Click on the *Browse...* button to pick the background image using the [file chooser](#).

Text Color

The *Text Color* field specifies the default text color. It can be a standard HTML color name or a hexadecimal RGB color of the form #RRGGBB. Click on the *Lookup...* button to pick the color graphically.

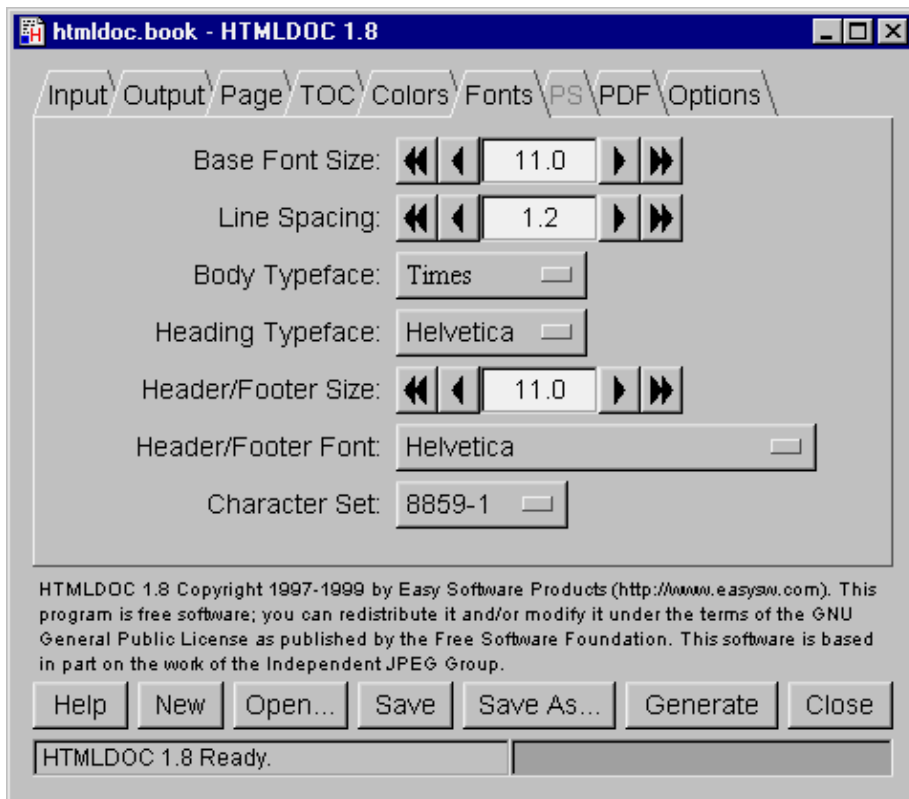


Figure 7-6 – The Fonts Tab

The Fonts Tab

The fonts tab (Figure 7-6) defines the fonts and character set used by the document.

Base Font Size

The *Base Font Size* field specifies the size of normal text in the document in points (1 point = 1/72nd inch). Click on the single arrow buttons to decrease or increase the size by 1/10th point or on the double arrow buttons to decrease or increase the size by whole points.

Line Spacing

The *Line Spacing* field specifies the spacing between lines as a multiple of the base font size. Click on the single arrow buttons to decrease or increase the size by 10ths or on the double arrow buttons to decrease or increase the size by whole numbers.

Body Typeface

The *Body Typeface* option button specifies the typeface to use for normal text. Click on the option button to select a typeface.

Heading Typeface

The *Heading Typeface* option button specifies the typeface to use for headings. Click on the option button to select a typeface.

Header/Footer Size

The *Header/Footer Size* field specifies the size of header and footer text in the document in points (1 point = 1/72nd inch). Click on the single arrow buttons to decrease or increase the size by 1/10th point or on the double arrow buttons to decrease or increase the size by whole points.

Header/Footer Font

The *Header/Footer Font* option button specifies the typeface and style to use for header and footer text. Click on the option button to select a typeface and style.

Character Set

The *Character Set* option button specifies the encoding of characters in the document. Click on the option button to select a character set.

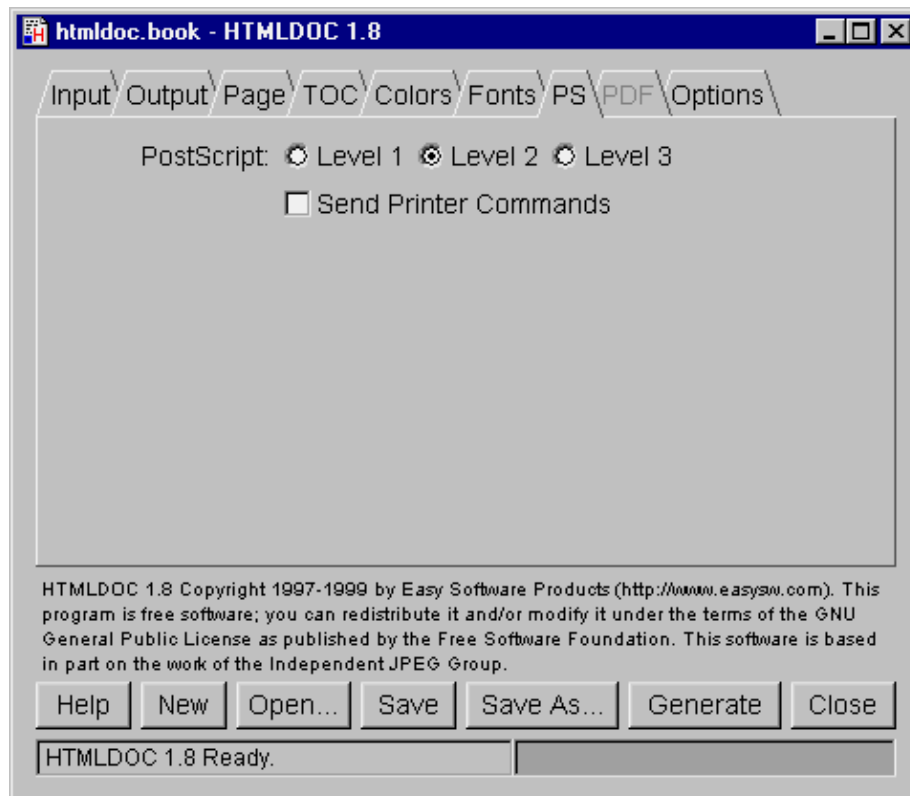


Figure 7–7 – The PS Tab

The PS Tab

The PS tab (Figure 7–7) contains options specific to PostScript output.

PostScript Level

Click on of the *Level* radio buttons to select the language level to generate. PostScript Level 1 is compatible with all PostScript printers and will produce the largest output files.

PostScript Level 2 is compatible with most PostScript printers and supports printer commands and JPEG image compression.

PostScript Level 3 is compatible with only the newest PostScript printers and supports Flate image compression in addition to the Level 2 features.

Send Printer Commands

The *Send Printer Commands* check box controls whether or not the output files contain PostScript `setpagedevice` commands for the page size and duplex settings. Click in the check box to enable or disable printer commands.

Printer commands are only available with Level 2 and 3 output and may not work with some printers.

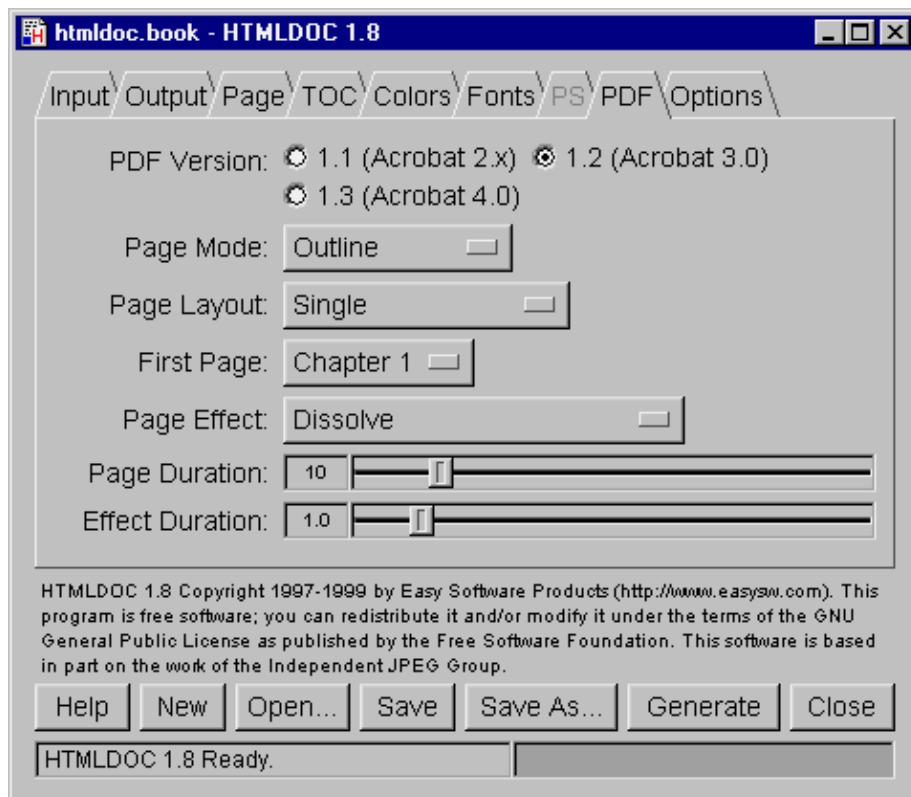


Figure 7–8 – The PDF Tab

The PDF Tab

The PDF tab (Figure 7–8) contains settings specific to PDF output.

PDF Version

The *PDF Version* radio buttons control what version of PDF is generated. PDF 1.2 is the most commonly supported version. Click on the corresponding radio button to set the version.

Page Mode

The *Page Mode* option button controls the initial viewing mode for the document. Click on the option button to set the page mode.

The *Document* page mode displays only the document pages. The *Outline* page mode displays the table-of-contents outline as well as the document pages. The *Full-Screen* page mode displays the document pages on the whole screen; this mode is used primarily for presentations.

Page Layout

The *Page Layout* option button controls the initial layout of document pages on the screen. Click on the option button to set the page layout.

The *Single* page layout displays a single page at a time. The *One Column* page layout displays a single column of pages at a time. The *Two Column Left* and *Two Column Right* page layouts display two columns of pages at a time; the first page is displayed in the left or right column as selected.

First Page

The *First Page* option button controls the initial page that is displayed. Click on the option button to choose the first page.

Page Effect

The *Page Effect* option button controls the page effect that is displayed in *Full-Screen* mode. Click on the option button to select a page effect.

Page Duration

The *Page Duration* slider controls the number of seconds that each page will be visible in *Full-Screen* mode. Drag the slider to adjust the number of seconds.

Effect Duration

The *Effect Duration* slider controls the number of seconds that the page effect will last when changing pages. Drag the slider to adjust the number of seconds.

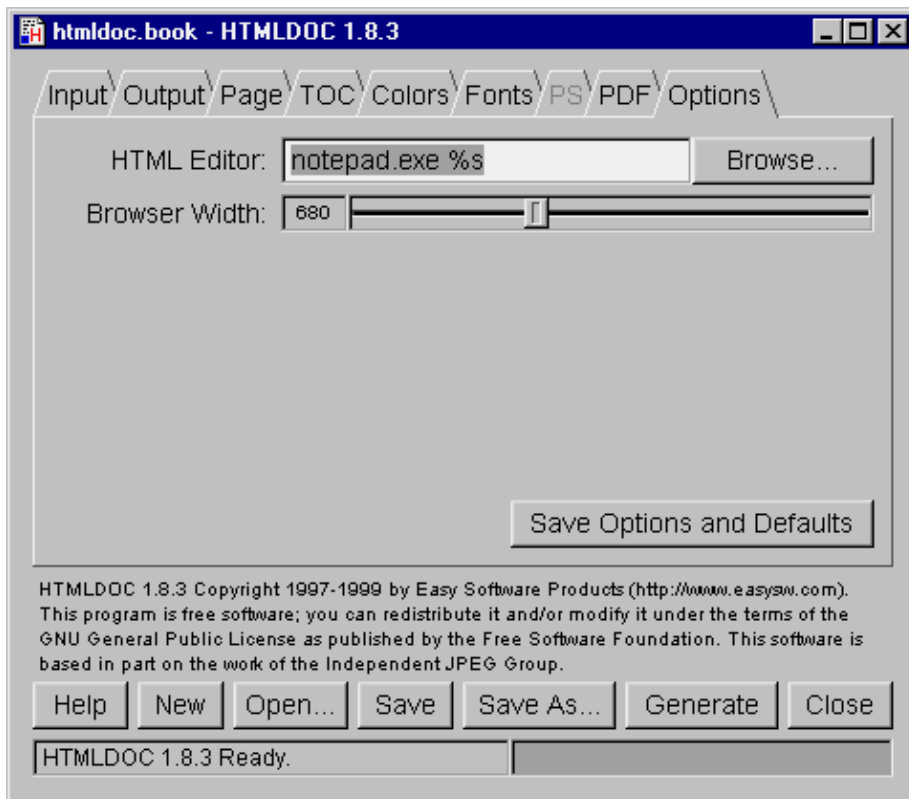


Figure 7-9 – The Options Tab

The Options Tab

The options tab (Figure 7-9) contains the HTML file editor of your choice and allows you to save the settings and options that will be used in new documents.

HTML Editor

The *HTML Editor* field contains the name of the HTML editor to run when you double-click on an input file or click on the *Edit Files...* button. Enter the program name in the field or click on the *Browse...* button to select the editor using the [file chooser](#).

The %s is added automatically to the end of the command name to insert the name of the file to be edited. If you are using Netscape Composer to edit your HTML files you should put "-edit" before the %s to tell Netscape to edit the file and not display it.

Browser Width

The *Browser Width* slider specifies the width of the browser in pixels that is used to scale images and other pixel measurements to the printable page width. You can adjust this value to more closely match the formatting on the screen.

Save Options and Defaults

The *Save Options and Defaults* button saves the HTML editor and all of the document settings on the other tabs for use in new documents. These settings are also used by the command-line version of *HTMLDOC*.

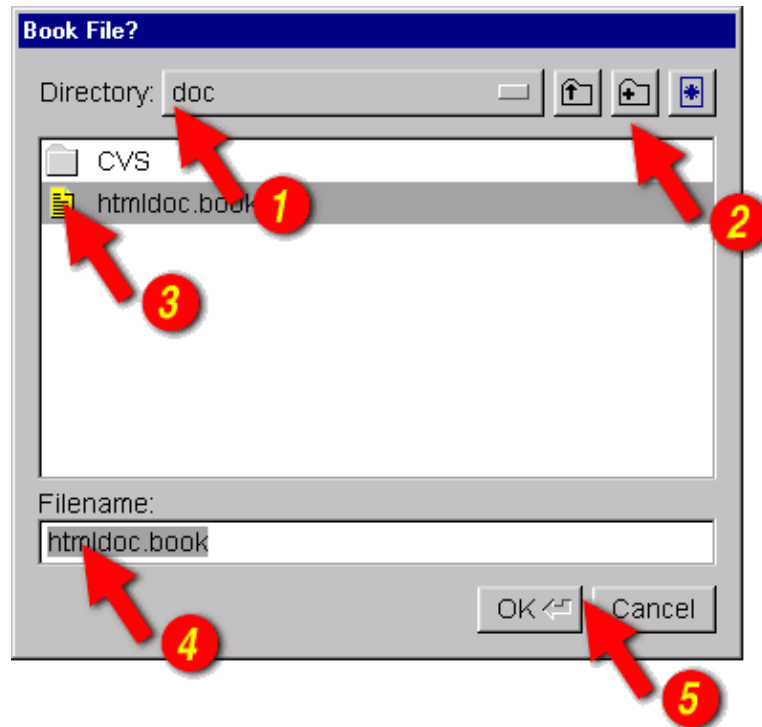


Figure 7-10 – The File Chooser

The File Chooser

The file chooser (Figure 7-10) allows you to select one or more files and create files and directories.

Directory

The *Directory* option button (1) shows the current directory or folder that is displayed in the file list (3). Click on the option button to navigate to other directories or folders.

Directory Buttons

The directory buttons (2) allow you to go up one level in the directory hierarchy, create a new directory, and show all files in the directory, respectively.

File List

The file list (3) lists the files and directories in the current directory or folder. Double-click on a file or directory to select that file or directory. Drag the mouse or hold the **CTRL** key down while clicking to select multiple files.

Filename

The *Filename* field contains the currently selected filename. Type a name in the field to select a file or directory. As you type any matching filenames will be highlighted; press the **TAB** key to accept the matches.

Dialog Buttons

The dialog buttons (5) close the file chooser dialog window. Click on the *OK* button to accept your selections or the *Cancel* button to reject your selections and cancel the file operation.

Chapter 8 – Command–Line Reference

This chapter describes all of the command–line options supported by *HTMLDOC*.

Basic Usage

The basic command–line usage for *HTMLDOC* is:

```
% htmldoc options filename1.html ... filenameN.html ENTER  
% htmldoc options filename.book ENTER
```

The first form converts the named HTML files to the specified output format immediately. The second form loads the specified *.book* file and displays the *HTMLDOC* window, allowing a user to make changes and/or generate the document interactively.

If no output file or directory is specified, then all output is sent to the standard output file.

Options

The following command–line options are recognized by *HTMLDOC*.

-d directory

The `-d` option specifies an output directory for the document files.

This option is not compatible with the PDF output format.

-f filename

The `-f` option specifies an output file for the document.

-t format

The `-t` option specifies the output format for the document and can be one of the following:

Format	Description
html	Generate one or more indexed HTML files.
pdf	Generate a PDF file (default version).
pdf11	Generate a PDF 1.1 file for Acrobat Reader 2.0.
pdf12	Generate a PDF 1.2 file for Acrobat Reader 3.0.
pdf13	Generate a PDF 1.3 file for Acrobat Reader 4.0.
ps	Generate one or more PostScript files (default level).
ps1	Generate one or more Level 1 PostScript files.
ps2	Generate one or more Level 2 PostScript files.
ps3	Generate one or more Level 3 PostScript files.

-v

The `-v` option specifies that progress information should be sent/displayed to the standard error file.

--bodycolor color

The `--bodycolor` option specifies the background color for all pages in the document. The color can be specified by name or as a 6-digit hexadecimal number of the form `#RRGGBB`.

--bodyfont typeface

The `--bodyfont` option specifies the default text font used for text in the document body. The `typeface` parameter can be one of the following:

typeface	Actual Font
----------	-------------

Arial	Helvetica
Courier	Courier
Helvetica	Helvetica
Monospace	Courier
Sans-Serif	Helvetica
Serif	Times
Symbol	Symbol
Times	Times

--bodyimage filename

The `--bodyimage` option specifies the background image for all pages in the document. The supported formats are GIF, JPEG, and PNG.

--book

The `--book` option specifies that the input files comprise a book with chapters and headings.

--bottom margin

The `--bottom` option specifies the bottom margin. The default units are points (1 point = 1/72nd inch); the suffixes "in", "cm", and "mm" specify inches, centimeters, and millimeters, respectively.

This option is only available when generating PostScript or PDF files.

--browserwidth pixels

The `--browserwidth` option specifies the browser width in pixels. The browser width is used to scale images and pixel measurements when generating PostScript and PDF files. It does not affect the font size of text.

The default browser width is 680 pixels which corresponds roughly to a 96 DPI display.

This option is only available when generating PostScript or PDF files.

--charset charset

The `--charset` option specifies the 8-bit character set encoding to use for the entire document. *HTMLDOC* comes with the following character set files:

charset	Character Set
8859-1	ISO-8859-1

8859-2	ISO-8859-2
8859-3	ISO-8859-3
8859-4	ISO-8859-4
8859-5	ISO-8859-5
8859-6	ISO-8859-6
8859-7	ISO-8859-7
8859-8	ISO-8859-8
8859-9	ISO-8859-9
8859-14	ISO-8859-14
8859-15	ISO-8859-15

--color

The `--color` option specifies that color output is desired.

This option is only available when generating PostScript or PDF files.

--compression[=level]

The `--compression` option specifies that Flate compression should be performed on the output file(s). The optional `level` parameter is a number from 1 (fastest and least amount of compression) to 9 (slowest and most amount of compression).

This option is only available when generating Level 3 PostScript or PDF files.

--datadir directory

The `--datadir` option specifies the location of data files used by *HTMLDOC*.

--duplex

The `--duplex` option specifies that the output should be formatted for two sided printing.

This option is only available when generating PostScript or PDF files. Use the `--pscommands` option to generate PostScript duplex mode commands.

--effectduration seconds

The `--effectduration` option specifies the duration of a page transition effect in seconds.

This option is only available when generating PDF files.

--firstpage page

The `--firstpage` option specifies the first page that will be displayed in a PDF file. The `page` parameter can be one of the following:

page	Description
p1	The first page of the document.
toc	The first page of the table-of-contents.
c1	The first page of chapter 1.

This option is only available when generating PDF files.

--fontsize size

The `--fontsize` option specifies the base font size for the entire document in points (1 point = 1/72nd inch).

--fontspacing spacing

The `--fontspacing` option specifies the line spacing for the entire document as a multiplier of the base font size. A `spacing` value of 1 makes each line of text the same height as the font.

--footer lcr

The `--footer` option specifies the contents of the page footer. The `lcr` parameter is a three-character string representing the left, center, and right footer fields. Each character can be one of the following:

lcr	Description
.	A period indicates that the field should be blank.
1	The number 1 indicates that the field should contain the current page number in decimal format (1, 2, 3, ...)
c	An "c" indicates that the field should contain the current chapter.
h	An "h" indicates that the field should contain the current heading.
i	A lowercase I indicates that the field should contain the current page number in lowercase roman numerals (i, ii, iii, ...)
I	An uppercase I indicates that the field should contain the current page number in uppercase roman numerals (I, II, III, ...)
l	A lowercase L indicates that the field should contain the logo image.
t	A "t" indicates that the field should contain the document title.

Setting the footer to ". . ." disables the footer entirely.

This option is only available when generating PostScript or PDF files.

--format format

The `--format` option specifies the output format for the document and can be one of the following:

Format	Description
html	Generate one or more indexed HTML files.
pdf	Generate a PDF file (default version).
pdf11	Generate a PDF 1.1 file for Acrobat Reader 2.0.
pdf12	Generate a PDF 1.2 file for Acrobat Reader 3.0.
pdf13	Generate a PDF 1.3 file for Acrobat Reader 4.0.
ps	Generate one or more PostScript files (default level).
ps1	Generate one or more Level 1 PostScript files.
ps2	Generate one or more Level 2 PostScript files.
ps3	Generate one or more Level 3 PostScript files.

--gray

The `--gray` option specifies that grayscale output is desired.

This option is only available when generating PostScript or PDF files.

--header

The `--header` option specifies the contents of the page header. The `lcr` parameter is a three-character string representing the left, center, and right header fields. Each character can be one of the following:

lcr	Description
.	A period indicates that the field should be blank.
1	The number 1 indicates that the field should contain the current page number in decimal format (1, 2, 3, ...)
c	An "c" indicates that the field should contain the current chapter.
h	An "h" indicates that the field should contain the current heading.
i	A lowercase i indicates that the field should contain the current page number in lowercase roman numerals (i, ii, iii, ...)
I	An uppercase I indicates that the field should contain the current page number in

	uppercase roman numerals (I, II, III, ...)
l	A lowercase L indicates that the field should contain the logo image.
t	A "t" indicates that the field should contain the document title.

Setting the header to ". . ." disables the header entirely.

This option is only available when generating PostScript or PDF files.

--headfontfont font

The `--headfontfont` option specifies the font that is used for the header and footer text. The `font` parameter can be one of the following:

- Courier
- Courier-Bold
- Courier-Oblique
- Courier-BoldOblique
- Times
- Times-Roman
- Times-Bold
- Times-Italic
- Times-BoldItalic
- Helvetica
- Helvetica-Bold
- Helvetica-Oblique
- Helvetica-BoldOblique

This option is only available when generating PostScript or PDF files.

--headfootsize size

The `--headfootsize` option sets the size of the header and footer text in points (1 point = 1/72nd inch).

This option is only available when generating PostScript or PDF files.

--headingfont typeface

The `--headingfont` options sets the typeface that is used for headings in the document. The `typeface` parameter can be one of the following:

typeface	Actual Font
Arial	Helvetica
Courier	Courier
Helvetica	Helvetica

Monospace	Courier
Sans-Serif	Helvetica
Serif	Times
Symbol	Symbol
Times	Times

--help

The `--help` option displays all of the available options to the standard output file.

--helpdir directory

The `--helpdir` option specifies the location of the on-line help files.

--jpeg[=quality]

The `--jpeg` option enables JPEG compression of continuous-tone images. The optional `quality` parameter specifies the output quality from 0 (worst) to 100 (best).

This option is only available when generating Level 2 and Level 3 PostScript or PDF files.

--landscape

The `--landscape` option specifies that the output should be in landscape orientation (long edge on top).

This option is only available when generating PostScript or PDF files.

--left margin

The `--left` option specifies the left margin. The default units are points (1 point = 1/72nd inch); the suffixes "in", "cm", and "mm" specify inches, centimeters, and millimeters, respectively.

This option is only available when generating PostScript or PDF files.

--logoimage filename

The `--logoimage` option specifies the logo image for the HTML navigation bar and page headers and footers for PostScript and PDF files. The supported formats are GIF, JPEG, and PNG.

--no-compression

The `--no-compression` option specifies that Flate compression should not be performed on the output files.

--no-pscommands

The `--no-pscommands` option specifies that PostScript device commands should not be written to the output files.

--no-title

The `--no-title` option specifies that the title page should not be generated.

--no-toc

The `--no-toc` option specifies that the table-of-contents pages should not be generated.

--numbered

The `--numbered` option specifies that headings should be numbered.

--outdir directory

The `--outdir` option specifies an output directory for the document files.

This option is not compatible with the PDF output format.

--outfile filename

The `--outfile` option specifies an output file for the document.

--pageduration seconds

The `--pageduration` option specifies the number of seconds that each page will be displayed in the document.

This option is only available when generating PDF files.

--pageeffect effect

The `--pageeffect` option specifies the page effect to use in PDF files. The `effect` parameter can be one of the following:

effect	Description
--------	-------------

none	No effect is generated.
bi	Box Inward
bo	Box Outward
d	Dissolve
gd	Glitter Down
gdr	Glitter Down and Right
gr	Glitter Right
hb	Horizontal Blinds
hsi	Horizontal Sweet Inward
hso	Horizontal Sweep Outward
vb	Vertical Blinds
vsi	Vertical Sweep Inward
vso	Vertical Sweep Outward
wd	Wipe Down
wl	Wipe Left
wr	Wipe Right
wu	Wipe Up

This option is only available when generating PDF files.

--pagelayout layout

The `--pagelayout` option specifies the initial page layout in the PDF viewer. The `layout` parameter can be one of the following:

layout	Description
single	A single page is displayed.
one	A single column is displayed.
twoleft	Two columns are displayed with the first page on the left.
tworight	Two columns are displayed with the first page on the right.

This option is only available when generating PDF files.

--pagemode mode

The `--pagemode` option specifies the initial viewing mode in the PDF viewer. The mode parameter can be one of the following:

mode	Description
document	The document pages are displayed in a normal window.
outline	The document outline and pages are displayed.
fullscreen	The document pages are displayed on the entire screen in "slideshow" mode.

This option is only available when generating PDF files.

--portrait

The `--portrait` option specifies that the output should be in portrait orientation (short edge on top).

This option is only available when generating PostScript or PDF files.

--pscommands

The `--pscommands` option specifies that PostScript device commands should be written to the output files.

This option is only available when generating Level 2 and Level 3 PostScript files.

--right margin

The `--right` option specifies the right margin. The default units are points (1 point = 1/72nd inch); the suffixes "in", "cm", and "mm" specify inches, centimeters, and millimeters, respectively.

This option is only available when generating PostScript or PDF files.

--size size

The `--size` option specifies the page size. The size parameter can be one of the following standard sizes:

size	Description
Letter	8.5x11in (216x279mm)
A4	8.27x11.69in (210x297mm)
Universal	8.27x11in (210x279mm)

Custom sizes are specified by the page width and length separated by the letter "x" to select a custom page size. Append the letters "in" for inches, "mm" for millimeters, or "cm" for centimeters.

This option is only available when generating PostScript or PDF files. Use the `--pscommands` option to generate PostScript page size commands.

--textcolor color

The `--textcolor` option specifies the default text color for all pages in the document. The color can be specified by name or as a 6-digit hexadecimal number of the form `#RRGGBB`.

--textfont typeface

The `--textfont` options sets the typeface that is used for text in the document. The `typeface` parameter can be one of the following:

typeface	Actual Font
Arial	Helvetica
Courier	Courier
Helvetica	Helvetica
Monospace	Courier
Sans-Serif	Helvetica
Serif	Times
Symbol	Symbol
Times	Times

--title

The `--title` option specifies that a title page should be generated.

--titleimage filename

The `--titleimage` option specifies the title image for the title page. The supported formats are GIF, JPEG, and PNG.

--tocfooter lcr

The `--tocfooter` option specifies the contents of the table-of-contents footer. The `lcr` parameter is a three-character string representing the left, center, and right footer fields. Each character can be one of the following:

lcr	Description
.	A period indicates that the field should be blank.
1	The number 1 indicates that the field should contain the current page number in

	decimal format (1, 2, 3, ...)
c	An "c" indicates that the field should contain the current chapter.
h	An "h" indicates that the field should contain the current heading.
i	A lowercase I indicates that the field should contain the current page number in lowercase roman numerals (i, ii, iii, ...)
I	An uppercase I indicates that the field should contain the current page number in uppercase roman numerals (I, II, III, ...)
l	A lowercase L indicates that the field should contain the logo image.
t	A "t" indicates that the field should contain the document title.

Setting the TOC footer to ". . ." disables the TOC footer entirely.

This option is only available when generating PostScript or PDF files.

--toheader lcr

The `--toheader` option specifies the contents of the table-of-contents header. The `lcr` parameter is a three-character string representing the left, center, and right header fields. Each character can be one of the following:

lcr	Description
.	A period indicates that the field should be blank.
1	The number 1 indicates that the field should contain the current page number in decimal format (1, 2, 3, ...)
c	An "c" indicates that the field should contain the current chapter.
h	An "h" indicates that the field should contain the current heading.
i	A lowercase I indicates that the field should contain the current page number in lowercase roman numerals (i, ii, iii, ...)
I	An uppercase I indicates that the field should contain the current page number in uppercase roman numerals (I, II, III, ...)
l	A lowercase L indicates that the field should contain the logo image.
t	A "t" indicates that the field should contain the document title.

Setting the TOC header to ". . ." disables the TOC header entirely.

This option is only available when generating PostScript or PDF files.

--toclevels levels

The `--toclevels` options specifies the number of heading levels to include in the table-of-contents pages. The `levels` parameter is a number from 1 to 6.

--top margin

The `--top` option specifies the top margin. The default units are points (1 point = 1/72nd inch); the suffixes "in", "cm", and "mm" specify inches, centimeters, and millimeters, respectively.

This option is only available when generating PostScript or PDF files.

--verbose

The `-v` option specifies that progress information should be sent/displayed to the standard error file.

--webpage

The `--webpage` option specifies that the input files comprise a web page (or site) and that no title page or table-of-contents should be generated.

This option is only available when generating PostScript or PDF files.

Appendix A – GNU General Public License

GNU GENERAL PUBLIC LICENSE Version 2, June 1991

Copyright (C) 1989, 1991 Free Software Foundation, Inc.
59 Temple Place – Suite 330, Boston, MA 02111–1307, USA

Everyone is permitted to copy and distribute verbatim copies of this license document, but changing it is not allowed.

GNU GENERAL PUBLIC LICENSE TERMS AND CONDITIONS FOR COPYING, DISTRIBUTION AND MODIFICATION

0. This License applies to any program or other work which contains a notice placed by the copyright holder saying it may be distributed under the terms of this General Public License. The "Program", below, refers to any such program or work, and a "work based on the Program" means either the Program or any derivative work under copyright law: that is to say, a work containing the Program or a portion of it, either verbatim or with modifications and/or translated into another language. (Hereinafter, translation is included without limitation in the term "modification".) Each licensee is addressed as "you".

Activities other than copying, distribution and modification are not covered by this License; they are outside its scope. The act of running the Program is not restricted, and the output from the Program is covered only if its contents constitute a work based on the Program (independent of having been made by running the Program). Whether that is true depends on what the Program does.

1. You may copy and distribute verbatim copies of the Program's source code as you receive it, in any medium, provided that you conspicuously and appropriately publish on each copy an appropriate copyright

notice and disclaimer of warranty; keep intact all the notices that refer to this License and to the absence of any warranty; and give any other recipients of the Program a copy of this License along with the Program.

You may charge a fee for the physical act of transferring a copy, and you may at your option offer warranty protection in exchange for a fee.

2. You may modify your copy or copies of the Program or any portion of it, thus forming a work based on the Program, and copy and distribute such modifications or work under the terms of Section 1 above, provided that you also meet all of these conditions:

- a. You must cause the modified files to carry prominent notices stating that you changed the files and the date of any change.
- b. You must cause any work that you distribute or publish, that in whole or in part contains or is derived from the Program or any part thereof, to be licensed as a whole at no charge to all third parties under the terms of this License.
- c. If the modified program normally reads commands interactively when run, you must cause it, when started running for such interactive use in the most ordinary way, to print or display an announcement including an appropriate copyright notice and a notice that there is no warranty (or else, saying that you provide a warranty) and that users may redistribute the program under these conditions, and telling the user how to view a copy of this License. (Exception: if the Program itself is interactive but does not normally print such an announcement, your work based on the Program is not required to print an announcement.)

These requirements apply to the modified work as a whole. If identifiable sections of that work are not derived from the Program, and can be reasonably considered independent and separate works in themselves, then this License, and its terms, do not apply to those sections when you distribute them as separate works. But when you distribute the same sections as part of a whole which is a work based on the Program, the distribution of the whole must be on the terms of this License, whose permissions for other licensees extend to the entire whole, and thus to each and every part regardless of who wrote it.

Thus, it is not the intent of this section to claim rights or contest your rights to work written entirely by you; rather, the intent is to exercise the right to control the distribution of derivative or collective works based on the Program.

In addition, mere aggregation of another work not based on the Program with the Program (or with a work based on the Program) on a volume of a storage or distribution medium does not bring the other work under the scope of this License.

3. You may copy and distribute the Program (or a work based on it, under Section 2) in object code or executable form under the terms of Sections 1 and 2 above provided that you also do one of the following:

- a. Accompany it with the complete corresponding machine-readable source code, which must be distributed under the terms of Sections 1 and 2 above on a medium customarily used for software interchange; or,
- b. Accompany it with a written offer, valid for at least three years, to give any third party, for a charge no more than your cost of physically performing source distribution, a complete machine-readable copy of the corresponding source code, to be distributed under the terms of Sections 1 and 2 above on a medium customarily used for software interchange; or,

- c. Accompany it with the information you received as to the offer to distribute corresponding source code. (This alternative is allowed only for noncommercial distribution and only if you received the program in object code or executable form with such an offer, in accord with Subsection b above.)

The source code for a work means the preferred form of the work for making modifications to it. For an executable work, complete source code means all the source code for all modules it contains, plus any associated interface definition files, plus the scripts used to control compilation and installation of the executable. However, as a special exception, the source code distributed need not include anything that is normally distributed (in either source or binary form) with the major components (compiler, kernel, and so on) of the operating system on which the executable runs, unless that component itself accompanies the executable.

If distribution of executable or object code is made by offering access to copy from a designated place, then offering equivalent access to copy the source code from the same place counts as distribution of the source code, even though third parties are not compelled to copy the source along with the object code.

4. You may not copy, modify, sublicense, or distribute the Program except as expressly provided under this License. Any attempt otherwise to copy, modify, sublicense or distribute the Program is void, and will automatically terminate your rights under this License. However, parties who have received copies, or rights, from you under this License will not have their licenses terminated so long as such parties remain in full compliance.
5. You are not required to accept this License, since you have not signed it. However, nothing else grants you permission to modify or distribute the Program or its derivative works. These actions are prohibited by law if you do not accept this License. Therefore, by modifying or distributing the Program (or any work based on the Program), you indicate your acceptance of this License to do so, and all its terms and conditions for copying, distributing or modifying the Program or works based on it.
6. Each time you redistribute the Program (or any work based on the Program), the recipient automatically receives a license from the original licensor to copy, distribute or modify the Program subject to these terms and conditions. You may not impose any further restrictions on the recipients' exercise of the rights granted herein. You are not responsible for enforcing compliance by third parties to this License.
7. If, as a consequence of a court judgment or allegation of patent infringement or for any other reason (not limited to patent issues), conditions are imposed on you (whether by court order, agreement or otherwise) that contradict the conditions of this License, they do not excuse you from the conditions of this License. If you cannot distribute so as to satisfy simultaneously your obligations under this License and any other pertinent obligations, then as a consequence you may not distribute the Program at all. For example, if a patent license would not permit royalty-free redistribution of the Program by all those who receive copies directly or indirectly through you, then the only way you could satisfy both it and this License would be to refrain entirely from distribution of the Program.

If any portion of this section is held invalid or unenforceable under any particular circumstance, the balance of the section is intended to apply and the section as a whole is intended to apply in other circumstances.

It is not the purpose of this section to induce you to infringe any patents or other property right claims or to contest validity of any such claims; this section has the sole purpose of protecting the integrity of the free software distribution system, which is implemented by public license practices. Many people have made generous contributions to the wide range of software distributed through that system in reliance on consistent application of that system; it is up to the author/donor to decide if he or she is willing to distribute software through any other system and a licensee cannot impose that choice.

This section is intended to make thoroughly clear what is believed to be a consequence of the rest of this License.

8. If the distribution and/or use of the Program is restricted in certain countries either by patents or by copyrighted interfaces, the original copyright holder who places the Program under this License may add an explicit geographical distribution limitation excluding those countries, so that distribution is permitted only in or among countries not thus excluded. In such case, this License incorporates the limitation as if written in the body of this License.

9. The Free Software Foundation may publish revised and/or new versions of the General Public License from time to time. Such new versions will be similar in spirit to the present version, but may differ in detail to address new problems or concerns.

Each version is given a distinguishing version number. If the Program specifies a version number of this License which applies to it and "any later version", you have the option of following the terms and conditions either of that version or of any later version published by the Free Software Foundation. If the Program does not specify a version number of this License, you may choose any version ever published by the Free Software Foundation.

10. If you wish to incorporate parts of the Program into other free programs whose distribution conditions are different, write to the author to ask for permission. For software which is copyrighted by the Free Software Foundation, write to the Free Software Foundation; we sometimes make exceptions for this. Our decision will be guided by the two goals of preserving the free status of all derivatives of our free software and of promoting the sharing and reuse of software generally.

NO WARRANTY

11. BECAUSE THE PROGRAM IS LICENSED FREE OF CHARGE, THERE IS NO WARRANTY FOR THE PROGRAM, TO THE EXTENT PERMITTED BY APPLICABLE LAW. EXCEPT WHEN OTHERWISE STATED IN WRITING THE COPYRIGHT HOLDERS AND/OR OTHER PARTIES PROVIDE THE PROGRAM "AS IS" WITHOUT WARRANTY OF ANY KIND, EITHER EXPRESSED OR IMPLIED, INCLUDING, BUT NOT LIMITED TO, THE IMPLIED WARRANTIES OF MERCHANTABILITY AND FITNESS FOR A PARTICULAR PURPOSE. THE ENTIRE RISK AS TO THE QUALITY AND PERFORMANCE OF THE PROGRAM IS WITH YOU. SHOULD THE PROGRAM PROVE DEFECTIVE, YOU ASSUME THE COST OF ALL NECESSARY SERVICING, REPAIR OR CORRECTION.

12. IN NO EVENT UNLESS REQUIRED BY APPLICABLE LAW OR AGREED TO IN WRITING WILL ANY COPYRIGHT HOLDER, OR ANY OTHER PARTY WHO MAY MODIFY AND/OR REDISTRIBUTE THE PROGRAM AS PERMITTED ABOVE, BE LIABLE TO YOU FOR DAMAGES, INCLUDING ANY GENERAL, SPECIAL, INCIDENTAL OR CONSEQUENTIAL DAMAGES ARISING OUT OF THE USE OR INABILITY TO USE THE PROGRAM (INCLUDING BUT NOT LIMITED TO LOSS OF DATA OR DATA BEING RENDERED INACCURATE OR LOSSES SUSTAINED BY YOU OR THIRD PARTIES OR A FAILURE OF THE PROGRAM TO OPERATE WITH ANY OTHER PROGRAMS), EVEN IF SUCH HOLDER OR OTHER PARTY HAS BEEN ADVISED OF THE POSSIBILITY OF SUCH DAMAGES.

END OF TERMS AND CONDITIONS